

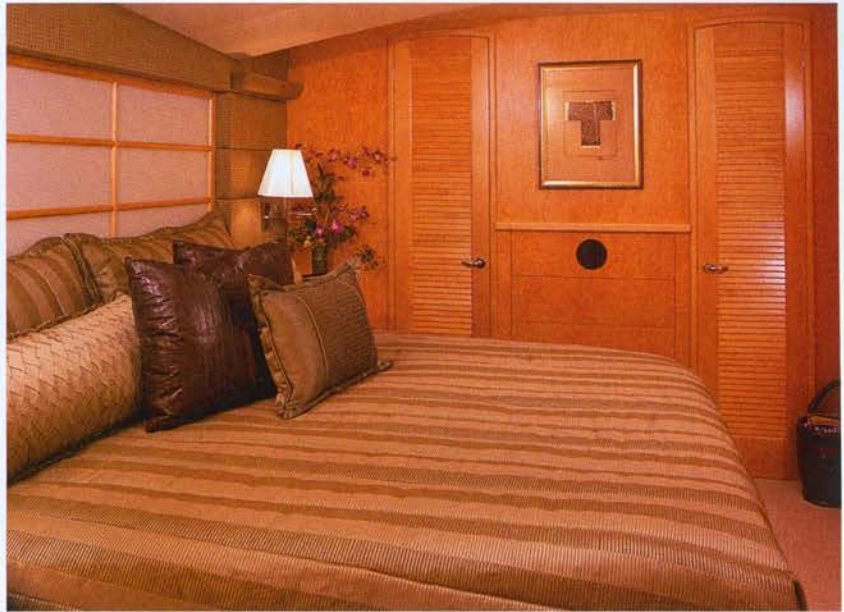
Sportfish Showcase




American Custom Yachts 72'



For 2002, ACY expands its line of contemporary sportfishermen with an eye-catching 72', the first from this builder to feature a fully-enclosed flybridge. Using the 65' model as a template, ACY simply made everything bigger, for more room, longer range and a larger cockpit. It did this without sacrificing performance. While the 72' has the same distinctive shear and traditional outline as the 65', it boasts unique design features like a push button salon air door and overhead cockpit A/C vents. Also, the engines are set farther apart in



order to enhance stability, maneuverability and to reduce draft. Well-thought out details include a stainless steel bow pulpit which retracts beneath the foredeck and twin generators stored in compartments under the cockpit deck.

Like all ACY yachts, interior appointments reflect owner specifications such as laminated bent glass bridge windows, aft station controls with helm seat, hidden cabinet hardware, custom refrigeration, or a cockpit-mounted ice maker. 

Specifications

LOA: 72'0" • Beam: 20'0" • Draft: 5'6" • Weight: 119,000 lbs. • Fuel: 2,650 U.S. gals.

Water: 400 U.S. gals. • Power: 2x DDC/MTU 16V 2000 @ 1,800 hp

American Custom Yachts, Dept SB, 6800 SW Jack James Drive, Stuart, FL 33997; (561) 221-9100; americancustomyachts.com